



AgraStrip® Allergen Quick Guide

AgraStrip® Allergen Test Kits include:

- 10 AgraStrip® lateral flow devices
- 1 bottle of ready-to-use extraction buffer
- 10 extraction tubes and caps
- 10 incubation vials
- 10 filtered dropper tips for the extraction tubes
- 10 swabs with break-off tips
- 1 rack for incubation vials

Available kits:

- AgraStrip® Almond 10002019
- AgraStrip® β-Lactoglobulin 10002032
- AgraStrip® Brazil nut 10002055
- AgraStrip® Casein 10002040
- AgraStrip® Cashew/Pistachio 10002044
- AgraStrip® Coconut 10002085
- AgraStrip® Crustacea 10002074
- AgraStrip® Whole Egg 10002058
- AgraStrip® Gluten* 10002000

Test procedures for:

- Raw materials/processed food
- Rinse waters
- Swab samples

- AgraStrip® Hazelnut 10002004
- AgraStrip® Lupin 10002047
- AgraStrip® Macademia nut 10002051
- AgraStrip® Milk 10002078
- AgraStrip® Mustard 10002068
- AgraStrip® Peanut 10001988
- AgraStrip® Sesame 10002062
- AgraStrip® Soy 10002010
- AgraStrip® Walnut 10002028

Shelf life: 12 months

Also Available:

- AgraQuant® Plus Allergen ELISA Test kits
- AgraQuant® Allergen ELISA Test kits

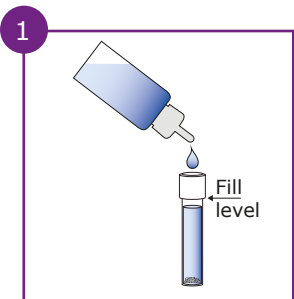
* AgraStrip® Gluten requires an additional dilution step prior to the transfer of the extract into the incubation vial (step 3). Please, refer to the package insert.



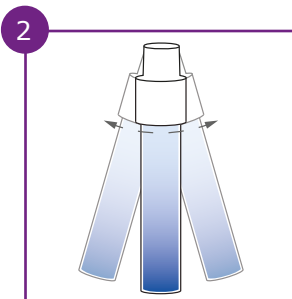


AgraStrip® Allergen Quick Guide

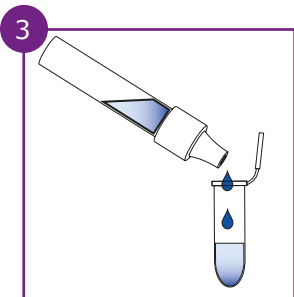
Procedure for finished products



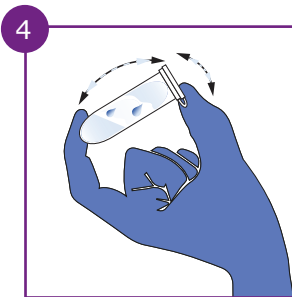
Add **0.2 mL** rinse water or weigh in **0.2 g** of homogenized sample into the extraction tube. You can estimate this amount by filling up one extraction tube cap. Fill with extraction buffer to the level shown in the picture.



Close the tube with the cap and shake vigorously by hand for **1 minute**. Remove the cap from the extraction tube and replace it with a fresh dropper tip.

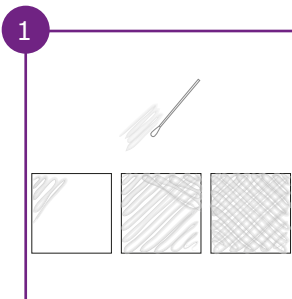


Transfer **12 drops (400 µl)** of the sample supernatant into the incubation vial by squeezing the extraction tube.

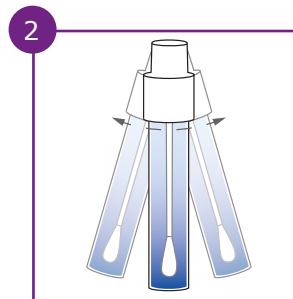


Shake the incubation vial vigorously by hand for **15 seconds** (ensuring that the liquid comes in contact with the lid of the vial).

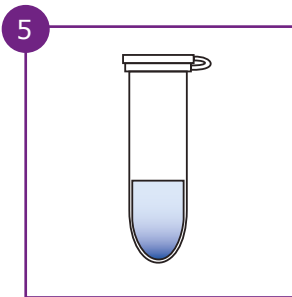
Procedure for environmental swabs



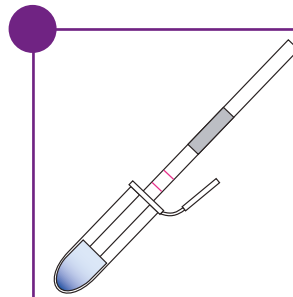
Fill one extraction tube with extraction Buffer up to where the tube gets thicker, wet the swab by dipping into the buffer. Wipe an area of 5 cm x 5 cm using side to side movements, rotating the swab tip as you go.



Place the swab into the extraction tube and carefully break off the end at the pre-scored point. Close the tube with a cap and shake vigorously for **1 minute**. Remove the cap and replace it with a fresh dropper tip.



Leave the vial rest on the vial rack at room temperature for **5 minutes**.



Place one test strip into the incubation vial and incubate for **5 minutes**. Remove the test strip and read the result immediately.

Result Interpretation

Negative Result:

Only the control line (C) appears in the results area of the test strip



Positive Result:

The control line (C) and the test line (T) appear in the results area of the test strip. Even a faint line in the test zone implies a positive result. The sample contains the target allergen in a concentration higher than the LOD*.



Invalid Result:

No control line appears. Regardless of whether the test line appears, please repeat the test with a fresh strip.

* LOD values must be validated for each matrix.



FMCG Industry Solutions Pty Ltd

ABN 22 135 446 007

Factory 11A, 1 - 3 Endeavour Rd, Caringbah NSW 2229

www.fmcgis.com.au

sales@fmcgis.com.au

1300 628 104 or 02 9540 2288